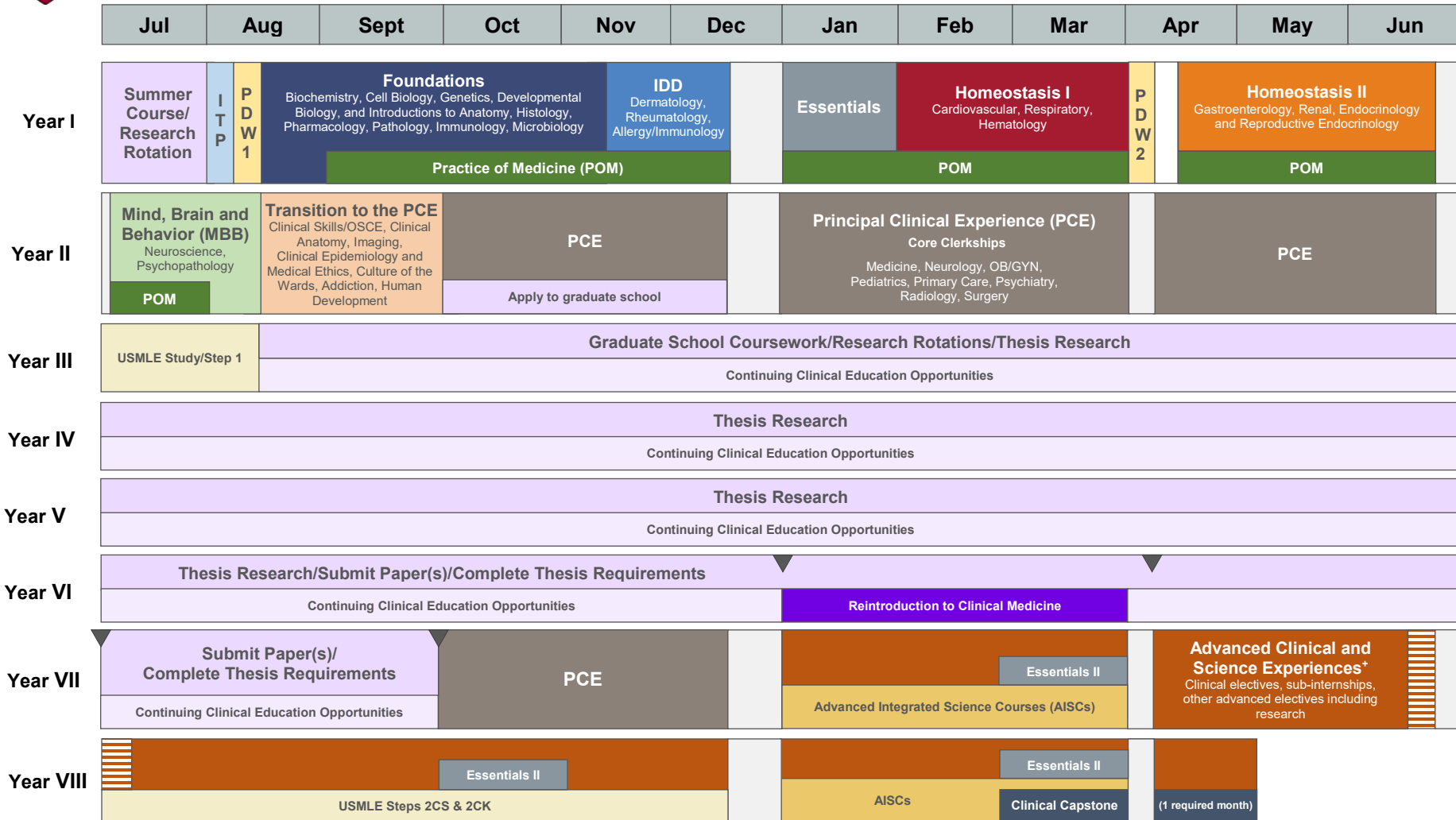




MD-PhD Pathways Curriculum Map

HARVARD MEDICAL SCHOOL



Introduction to the Profession (ITP)

Practice of Medicine (POM):
Foundational communication, physical exam, clinical reasoning and presentation skills; includes Foundational Continuity Clinic (FCC)

Immunity in Defense and Disease (IDD)

Professional Development Weeks (PDW):
Periods of assessment, feedback, self-reflection and advising to consolidate learning and generate individualized learning plans

Essentials of the Profession: Health Policy, Medical Ethics and Professionalism, Social Medicine, Clinical Epidemiology/Population Health

Essentials II: one-month required course

MD Re-entry: Three possible points to re-enter PCE

Recess

Comprehensive Exam

USMLE Step 1, Steps 2CS & 2CK

Step 1: Study July and take Pre-PhD in August

Steps 2CS & 2CK: Take CS by 11/1 and CK by 12/31 Year VIII

AISCs are optional for MD-PhD students

+ While research opportunities are available in the last year and half of medical school, these cannot overlap with clinical coursework which require 100% effort.