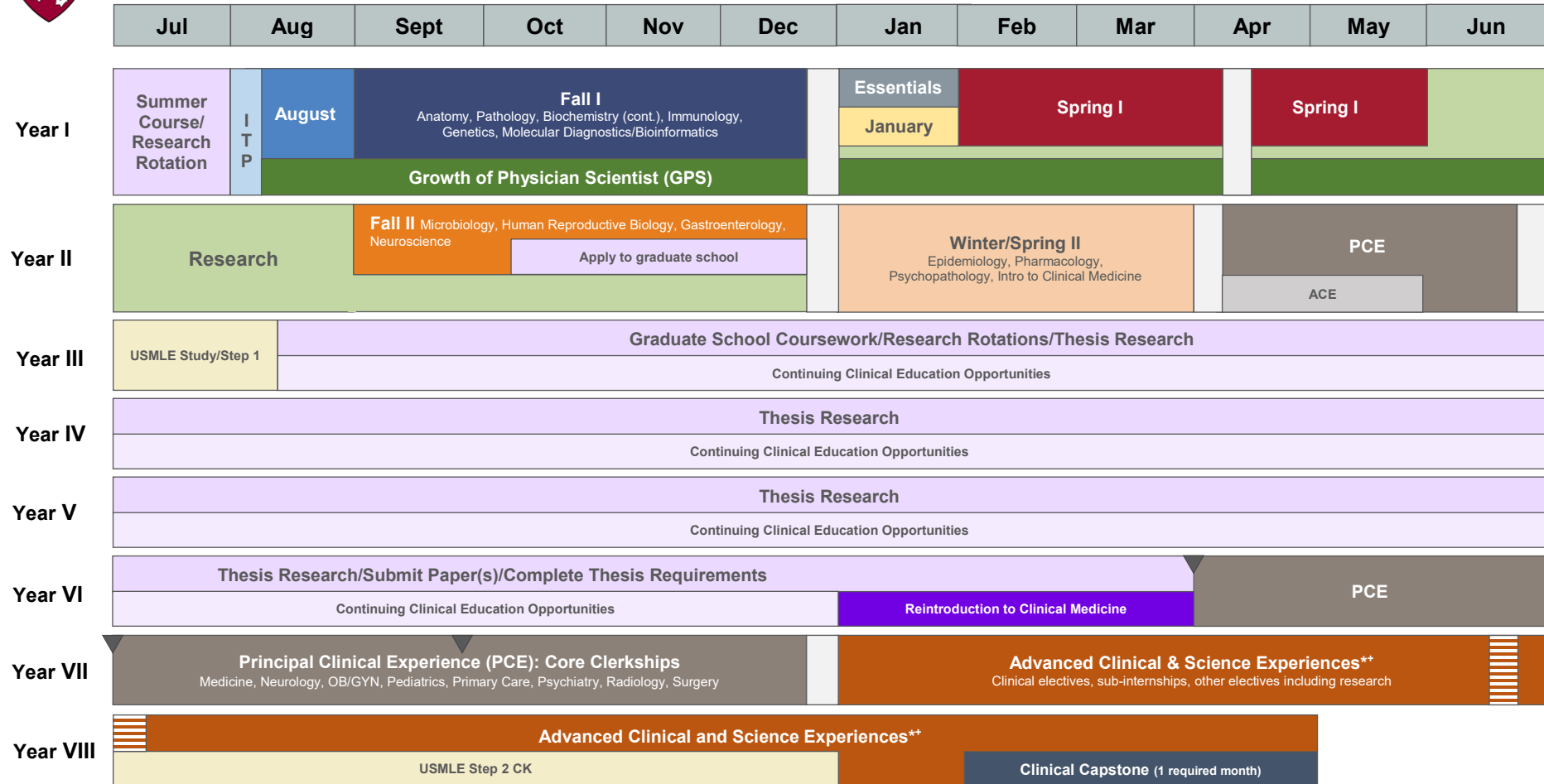




# MD-PhD Health Sciences and Technology Curriculum Map

HARVARD MEDICAL SCHOOL



Introduction to the Profession (ITP)

August: Biostatistics, Matlab for Medicine, Intro to Biochemistry

January: Essentials of the Profession, Principles of Biomedical Imaging

Spring I: Introduction to Care of Patients, Hematology, Endocrinology, Cardiovascular Pathophysiology, Respiratory Pathophysiology, Renal Pathophysiology, Musculoskeletal Pathophysiology

Anchoring Clinical Experience (ACE)

Note: For five-year students only, two-month full-time experience at Mt. Auburn Hospital, followed by Step 1

MD Re-entry: Three possible points to re-enter PCE

Recess

\*Note: Due to varying schedules, students in Advanced Clinical & Science Experiences have different break periods.

Comprehensive Exam

**USMLE Step 1, Step 2 CK**

**Step 1:** Study July and take Pre-PhD in August  
**Step 2 CK:** Take by 12/31 Year VIII

+ While research opportunities are available in the last year and half of medical school, these cannot overlap with clinical coursework which require 100% effort.