



Public Transportation by T

Green Line: “E” Trolley to Huntington Avenue. Mission Hill Park is closest stop. Walk [climb] .1 mile up Parker Hill Avenue.

Orange Line: Take from major commuter hubs of North Station [from north] or Back Bay [from south] to Roxbury Crossing. Follow Tremont Street .7 mile. Turn Left on Huntington Avenue .3 mile.

Turn left onto Parker Hill Avenue .1 mile. Can also use the Jackson Square Orange Line T stop.



Public Transportation by Bus

[From Forest Hills Station]:

Take the #39 Bus to Huntington Avenue. Get off at Mission Hill Park Apartments and walk up Parker Hill Avenue.

[From Dudley Station]: Take the #66 Bus to Huntington Avenue. Get off at Mission Hill Park Apartments and walk up Parker Hill Avenue.

Driving

From Interstate 93

Follow I 93 to exit 18 (Massachusetts Avenue/Roxbury Exit) Proceed off the exit in the left lanes. As you are coming off the exit go to the lane that says Melnea Cass Blvd. Follow Melnea Cass Blvd. Crossing over Massachusetts Avenue. Go approximately 6 lights to Tremont Street. Turn left onto Tremont Street, with the Boston Police Department Headquarters on your right. Proceed on Tremont to fourth set of lights, take right [remains Tremont Street]. Follow Tremont Street to Huntington Avenue at Brigham Circle. Turn left onto Huntington Avenue to the second set of lights. Turn left onto Parker Hill Avenue. Judge Baker Children’s Center, #53 at the top of the hill is on your right.

From Storrow Drive

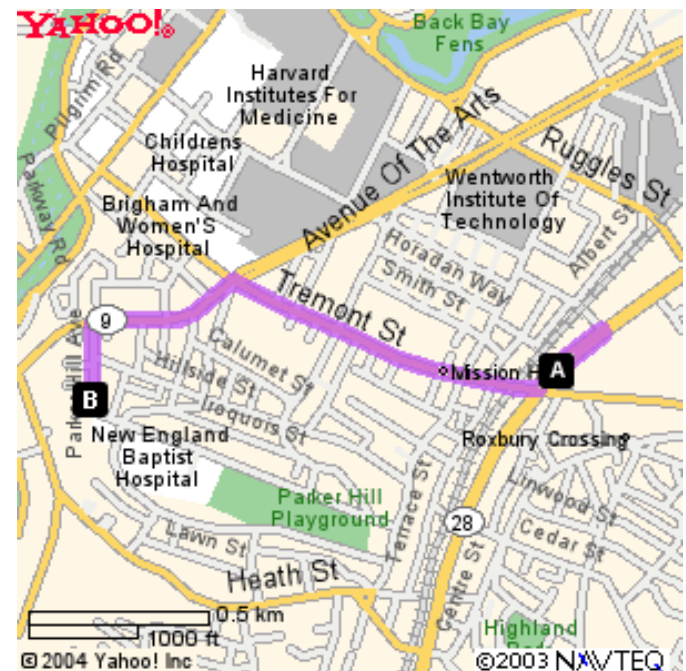
Follow Storrow Drive to the Route 1 Exit [Fenway/Kenmore Square Exit]. Bear left to the Fenway Exit. Once on the Fenway ramp, stay to the right to Brookline Avenue. Follow Brookline Avenue to Francis Street. Turn left onto Francis Street following it to its end turning right onto Huntington Avenue. Follow Huntington to the second light, turn left onto Parker Hill Avenue. Judge Baker Children’s Center, #53 at the top of the hill is on your right.

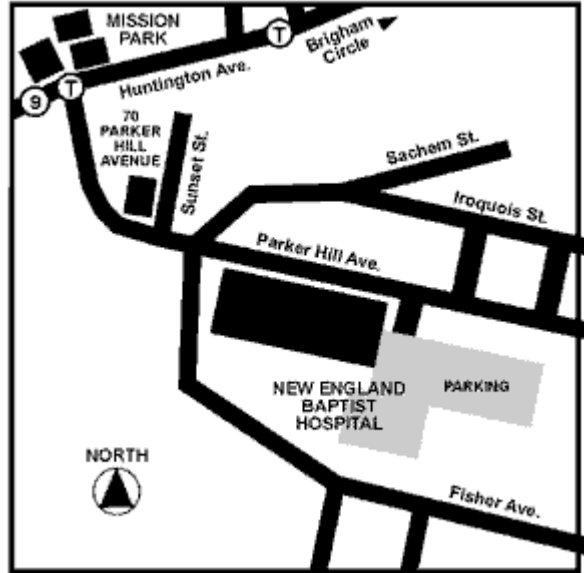
From The Mass Pike (eastbound only)

Follow the Mass Pike [east] to Exit 22 –Prudential. Stay in the left lane following Route 9 onto Huntington Avenue. Follow Huntington Avenue 1.8 miles to Parker Hill Avenue. Turn left onto Parker Hill Avenue. Judge Baker Children’s Center, #53 at the top of the hill is on your right.

From Interstate 95, Route 128

Follow I-95/Route 128 to Route 9 East – Boston. Follow Route 9 through Newton and Brookline into Boston. After going under Route 1 overpass proceed to 2nd traffic light. Turn right onto Parker Hill Avenue. Judge Baker Children’s Center, #53 at the top of the hill is on your right.





MISSION LINK Schedule

The Mission Link is a small bus serving Mission Hill that runs every 20 minutes.

Monday through Friday

Green Route

7:30 A.M. - 9:30 A.M. / Every 30 minutes
 Brigham Circle at Tremont St. (Green Line E) / Roxbury Crossing (Orange Line) / Columbus Avenue / Cedar Street / Terrace Street / Gore Street / Parker Street / Hillside Street / Calumet Street / Parker Street / Fisher Avenue / Parker Hill Avenue / New England Baptist Hospital / Wait Street / Huntington Avenue / Brigham Circle

Red Route

10:30 A.M. - 1:30 P.M. / Every 30 minutes
 Brigham Circle at Tremont Street (Green Line E) / St. Alphonsus Street / Smith Street / Parker Street / Annunciation Road / Parker Street / Hillside Street / Calumet Street / Parker Street / Fisher Avenue / Parker Hill Avenue / New England Baptist Hospital / Parker Hill Avenue / Hillside Street / Wait Street / Huntington Avenue / Brigham Circle

Blue Route

2:00 P.M. - 6:30 P.M. / Every 20 minutes
 Brigham Circle at Tremont Street (Green Line E) / St. Alphonsus Street / Calumet Street / Parker Street / Fisher Avenue / Parker Hill Avenue / New England Baptist Hospital / Parker Hill Avenue / Hillside Street / Wait Street / Huntington Avenue / Brigham Circle. *Saturday Service*
 9:00 A.M. - 2:00 P.M.

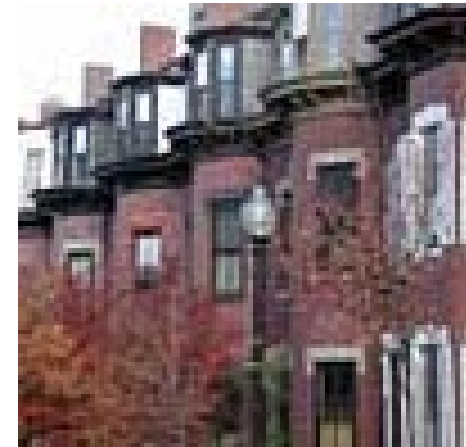


Alternative Diving Routes

Parker Hill Avenue can be accessed via Fisher Avenue. Follow rotary on Centre St. to Fisher Avenue.

By Commuter Train

From North Station or Commuter rail routes from the South, follow Orange Line routes to Roxbury Crossing or Jackson Square.



Links

www.missionhillmainstreets.org
www.mbta.com